

**This product may be purchased from Connevens Limited secure online store
at www.DeafEquipment.co.uk**



DeafEquipment.co.uk
Solutions to improve the quality of life

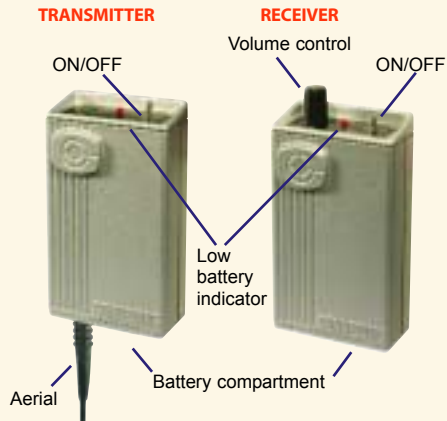


Connevens 220 Lite User Guide



Developed especially for the domestic & social market, the single channel 220 Lite combines the high sound quality, robustness and value for money price tag of the CRM-220; with the primary concern of many users – simplicity.

Straight-forward to use, the 220 Lite is an excellent choice of entry level personal fm radio aid for the domestic & social user.



Step 1 Batteries

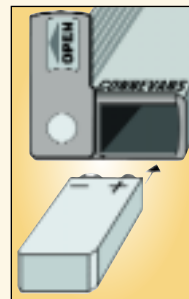
The 220 Lite may be used with alkaline or NiMH rechargeable PP3 batteries.

Fitting batteries

To fit a battery, slide open the battery cover, insert as shown.

Although there is a battery polarity label in the 220 Lite, between you and me you can actually fit the battery either way around and it will still work!

The performance of the 220 Lite is the same whatever type of battery is used. Note: the size of alkaline batteries varies between manufacturers, Energiser batteries fit well, do not force fit an oversize battery otherwise you will have a problem removing it.



Step 2 Turning on



Check the channel number of the receiver, is it the same channel as the transmitter?

Turn on the units by moving the toggle switch to the left towards the middle. The battery low indicator should give you a confidence wink.

When the battery charge becomes low, the indicator will light and remain lit until the battery is changed.

Step 3 Using the inductive neckloop with a hearing aid

- 1 The hearing aid user should listen at arm's length to somebody talking, to establish the level of sound from the hearing aid alone.
- 2 The hearing aid wearer should take the receiver and place the neck loop around their neck. They should then turn their hearing aid(s) to the 'T' position.
- 3 The helper should take the 220 Lite transmitter and walk to the other side of the room while talking into the microphone at 150mm (the length of a biro) from the mouth.
- 4 The hearing aid user should be able to hear the helper through the 220 Lite receiver by adjusting the volume up to a comfortable level.

Congratulations, it's as simple as that!



Transmitter



Receiver

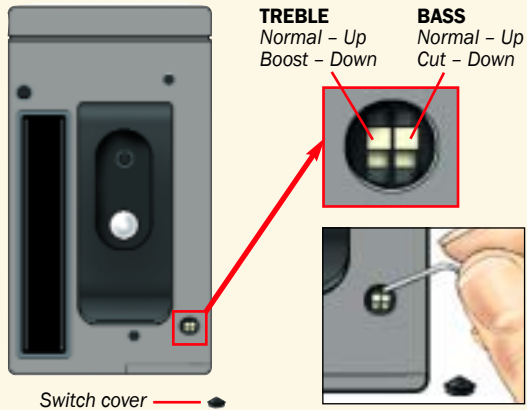


Step 4 Adjusting the tone control if necessary

The 220 Lite has automatic gain control to provide consistency of signal level. The Connevans 220 Lite has a wide frequency response, with good low frequency response and low distortion.

On the rear of the receiver are two very small 'hidden' tone adjust slider switches (see illustration). One is a bass cut and the other a treble boost. These tone controls allow you to match the sound through the radio aid system to the sound of the hearing aid alone – simply choose the setting you prefer. The easiest way to change these switches is to use the straightened out end of an ordinary paperclip.

When used with an inductive loop the loop is worn around the neck for use with post-aural hearing aids. For direct input hearing aids a wide range of connection leads are available – please refer to our current price list for an indication of the available range.



Step 5 Connecting to a TV

A TV sound connecting lead is included in the pack. The preferred method of connection is to use the TV AUDIO OUT connection – the 3.5mm jack plug should be plugged into the socket on the side of the transmitter.

A SCART adaptor is included for use when an AUDIO OUT connection is not available.





Connevans Limited

54 Albert Road North, Reigate, Surrey RH2 9YR
Switchboard 01 737 247571

Text/Minicom 01 737 243134 Fax 01 737 223475
Email mail@connevans.com

Information website: www.connevans.com
Online shopping: www.DeafEquipment.co.uk

2222LITE V0.2 April 2007



The Declaration of Conformity for the CRM-220 radio aid system is published on the website: <http://www.connevans.com/CE>



At the end of their useful life, the packaging, product and batteries should be disposed of via a suitable recycling centre. Do not dispose of with your normal household waste. Do not burn.