



Connevens.info

Solutions to improve the quality of life

*Offering you choice
Helping you choose*

This product may be purchased from Connevens Limited
secure online store at www.DeafEquipment.co.uk

DeafEquipment.co.uk



Roger Clip-On Mic

Quick setup guide / Schnellstartanleitung

Guide d'installation rapide / Guía rápida de instalación



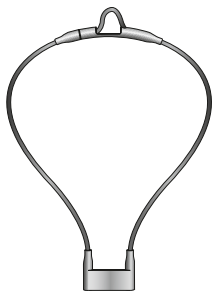
roger



PHONAK
life is on

Components
Komponenten
Composants
Componentes

Roger Clip-On Mic



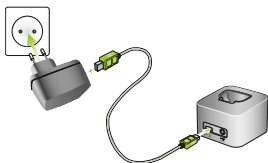
Setting up the docking station

Docking Station einrichten

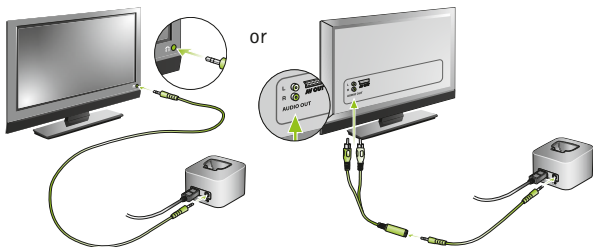
Mise en place de la station d'accueil

Configuración de la base de conexión

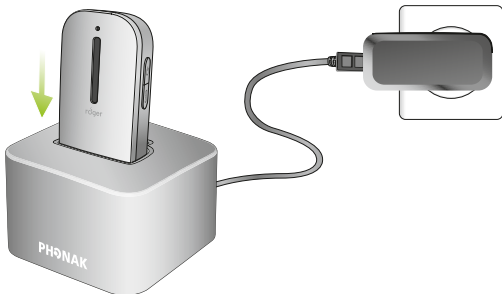
A



B



Charging Roger Clip-On Mic
Roger Clip-On Mic aufladen
Charger Roger Clip-On Mic
Cargar el Roger Clip-On Mic

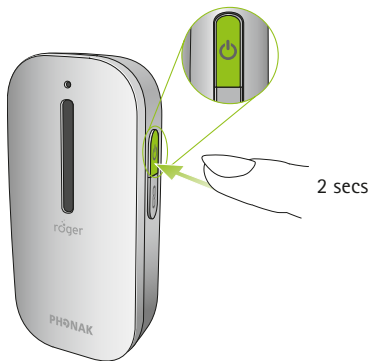


Switching on Roger Clip-On Mic

Roger Clip-On Mic einschalten

Mettre en marche Roger Clip-On Mic

Encender el Roger Clip-On Mic



Connecting to your Roger receiver
 Verbinden mit Ihren Roger-Empfängern
 Connecter à votre récepteur Roger
 Conectar su receptor Roger



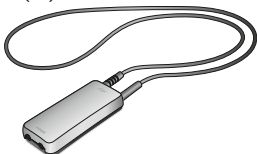
Up to two Roger ear-level receivers (A) or one Roger MyLink (B)
 Bis zu zwei Roger-Empfänger (A) oder ein Roger MyLink (B)
 Jusqu'à deux récepteurs Roger au niveau de l'oreille (A) ou un Roger MyLink (B)
 Hasta dos receptor Roger de oído (A) o un Roger MyLink (B)

A (2x)

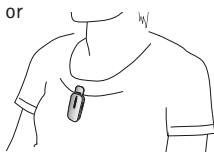
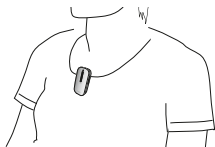


or

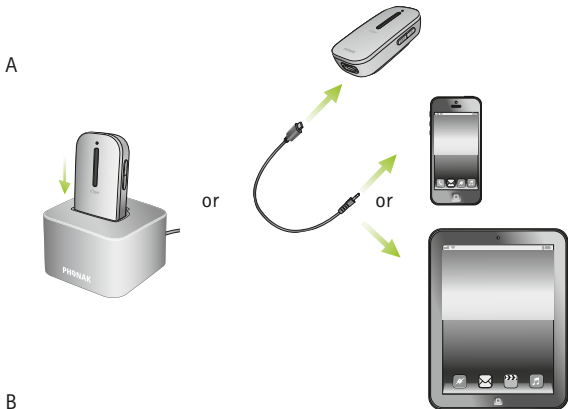
B (1x)



Wearing Roger Clip-On Mic
Roger Clip-On Mic tragen
Porter Roger Clip-On Mic
Llevar Roger Clip-On Mic



Listening to a multimedia device
Verbinden mit einem Multimediagerät
Connection à un appareil multimédia
Conexión a un dispositivo multimedia



Switch your multimedia device on and press play/start
Schalten Sie nun Ihr Multimediagerät ein und spielen Sie das Audiosignal ab
Mettez en marche votre appareil multimédia et pressez play/start
Encienda el dispositivo multimedia y pulse play/start



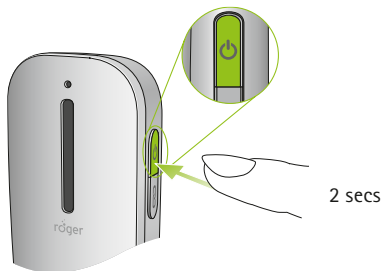


Switching off Roger Clip-On Mic

Roger Clip-On Mic ausschalten

Eteindre Roger Clip-On Mic

Apagar Roger Clip-On Mic





The Roger Clip-On Mic User Guide provides more detailed usage information.

Die Roger Clip-On Mic Gebrauchsanweisung informiert detailliert über die Anwendungsmöglichkeiten.

Le mode d'emploi Roger Clip-On Mic vous donnera des informations détaillées sur l'utilisation.

Las instrucciones de uso del Roger Clip-On Mic le darán una información más detallada sobre su uso.



Indicator light (LED status)


Optische Anzeige (LED-Status)


Témoin lumineux (LED status)

Indicador de luminoso (LED status)

 Mute mode / Stumm / Mode sourdine / Mode silenciosa

 Charging / Aufladen / Chargement / Cargar


 Fully charged / Voll geladen / Complètement chargé / Completamente cargado

 No connection to primary microphone
Switch on your primary microphone

Keine Verbindung zum Hauptmikrofon
Schalten Sie das Hauptmikrofon ein

Pas de connexion au microphone principal
Allumez votre microphone principal

No hay conexión con el micrófono principal
Encienda su micrófono principal

 Low battery. Charge Roger Clip-On Mic
Niedriger Batteriestand. Laden Sie das Roger Clip-On Mic
Accumulateur faible. Chargez Roger Clip-On Mic
Pila baja. Cargue Roger Clip-On Mic

Manufacturer:

Phonak Communications AG

Laenggasse 17

CH-3280 Murten

Switzerland

www.phonak.com/phonak-roger

