



**Connevens.info**

Solutions to improve the quality of life

*Offering you choice  
Helping you choose*

This product may be purchased from Connevens Limited  
secure online store at [www.DeafEquipment.co.uk](http://www.DeafEquipment.co.uk)

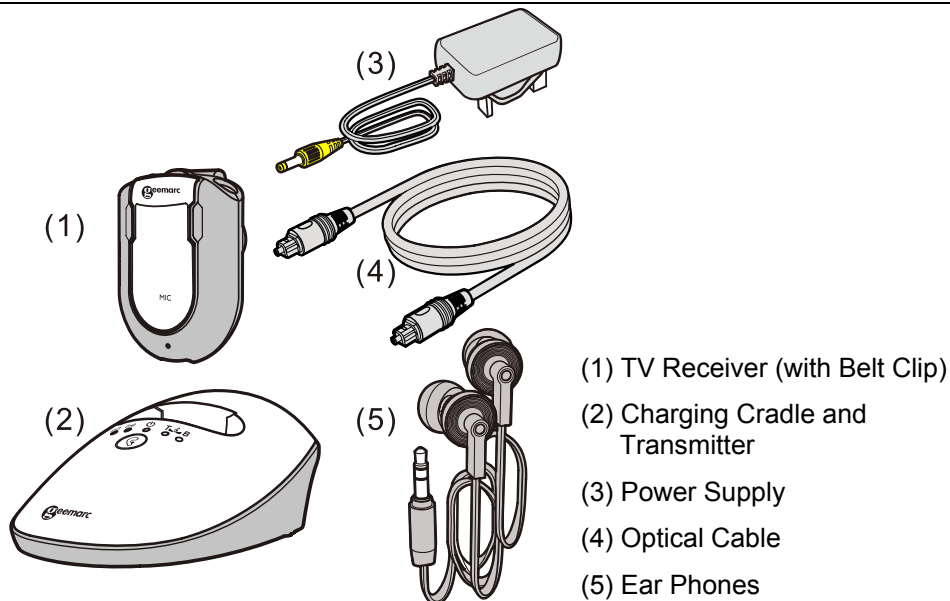
**DeafEquipment.co.uk**



## QUICK USER GUIDE

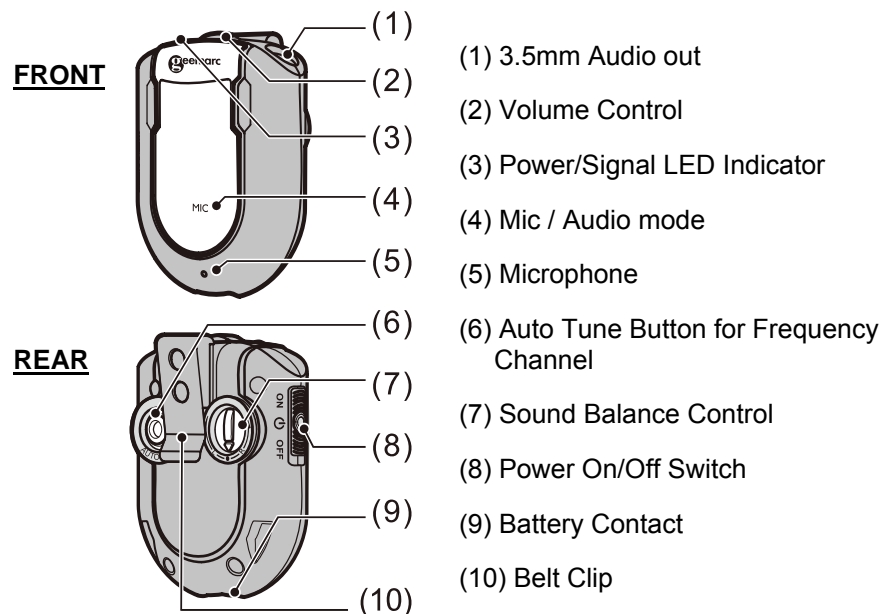
!!! Please refer to our website: [www.geemarc.com](http://www.geemarc.com) for an up to date user guide, as there may be important updates and changes you need to be aware of !!!

### PACK COMPONENTS

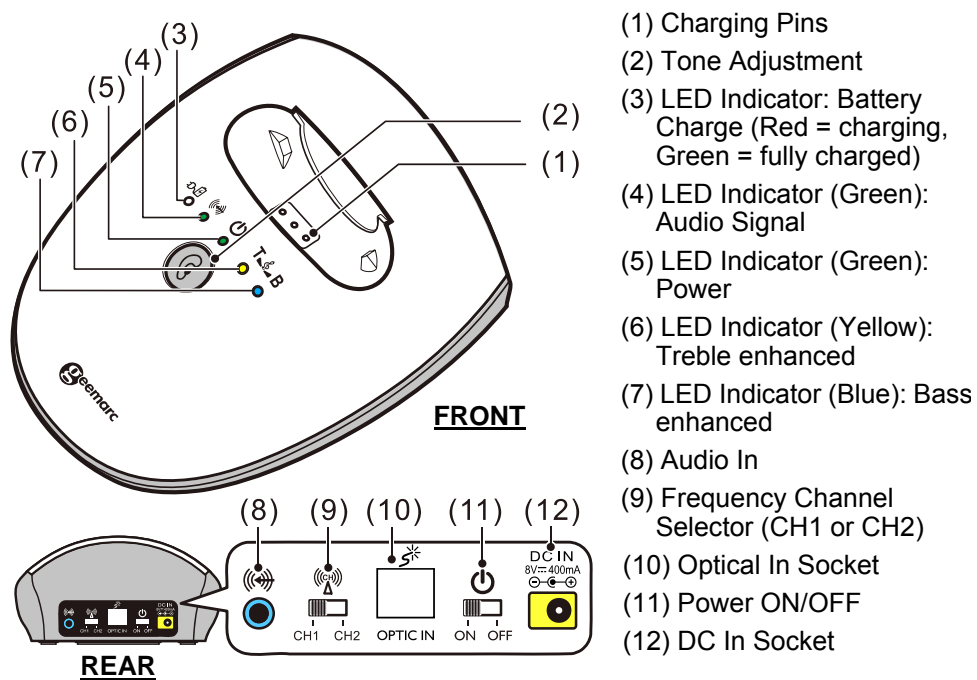


### Description

#### Function Identification: TV Receiver



#### Function Identification: Charging Cradle



### INTRODUCTION

The Geemarc Wireless Audio Listener is an audio amplification system specifically designed for people with hearing difficulties.

The Geemarc Audio Listener can be used with all kinds of audio systems for interference-free listening enjoyment – **TV set, Smartphone, DVD player, CD player, Hi-Fi system, etc.** Audio output from a TV or audio device is transmitted by the Charging Cradle, the wireless receiver receives the signal and amplifies the audio sound for the listener.

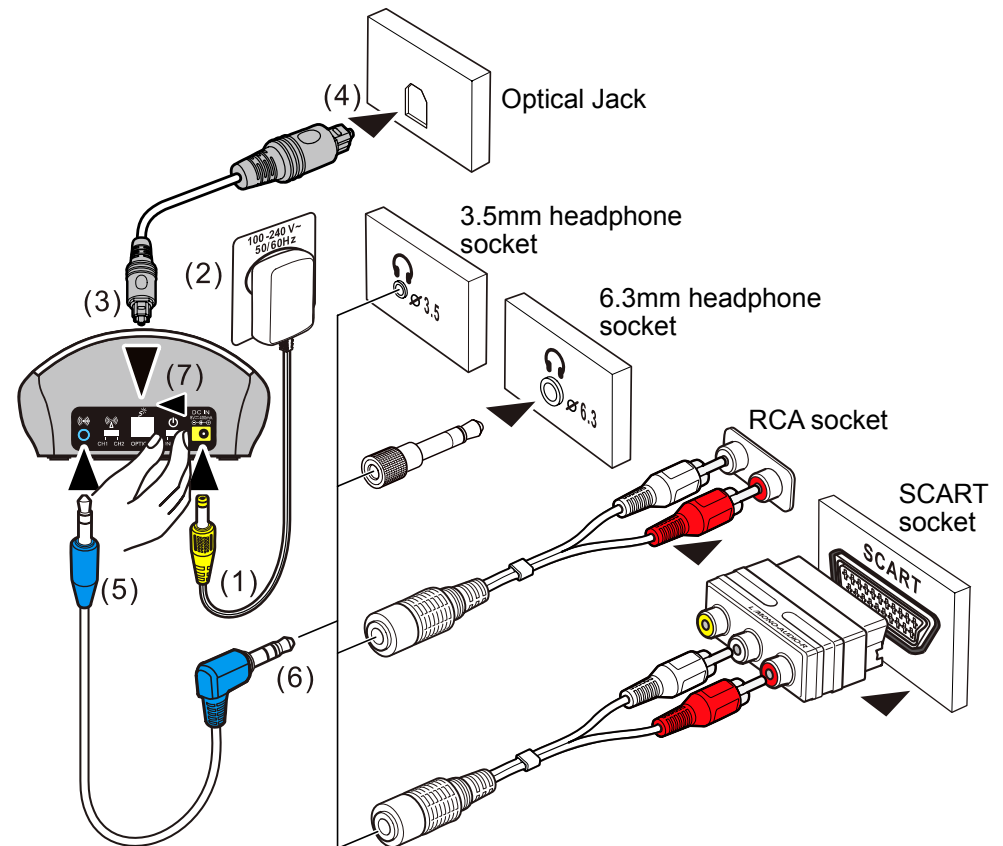
- The listener's comfort and long-term enjoyment has been built into every feature of the Geemarc Wireless Audio Listener:
- Rich, adjustable audio quality:
  - o Broad audio bandwidth;
  - o Adjustable bass, treble and balance to compensate for hearing loss.
- Up to 25 meters transmit-receive range keeps you within hearing distance all over the house and garden;
- Auto-tune button on your Receiver – tune in for the best sound exactly where you are;
- Listen and keep in touch with your surroundings:
  - o Multiple Receivers can be paired with one Charging Cradle;
  - o Single-touch Mute function switches the Audio Listener into a conversation assistant enabling you to talk with and listen to the people around you with the receiver on, taking advantage of its built-in audio amplifier to hear everything better.
- Up to 6 hours of rechargeable battery life per full charge – never lose the soundtrack in

mid-program;

- Only 3 hours to fully recharge the Receiver simply by replacing the Receiver in its Charging Cradle.

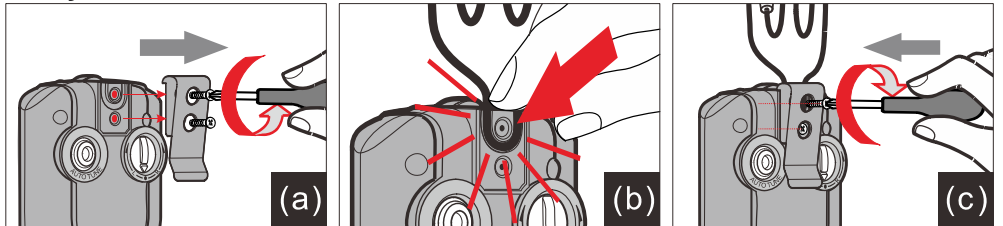
### INSTALLATION

#### Transmitter

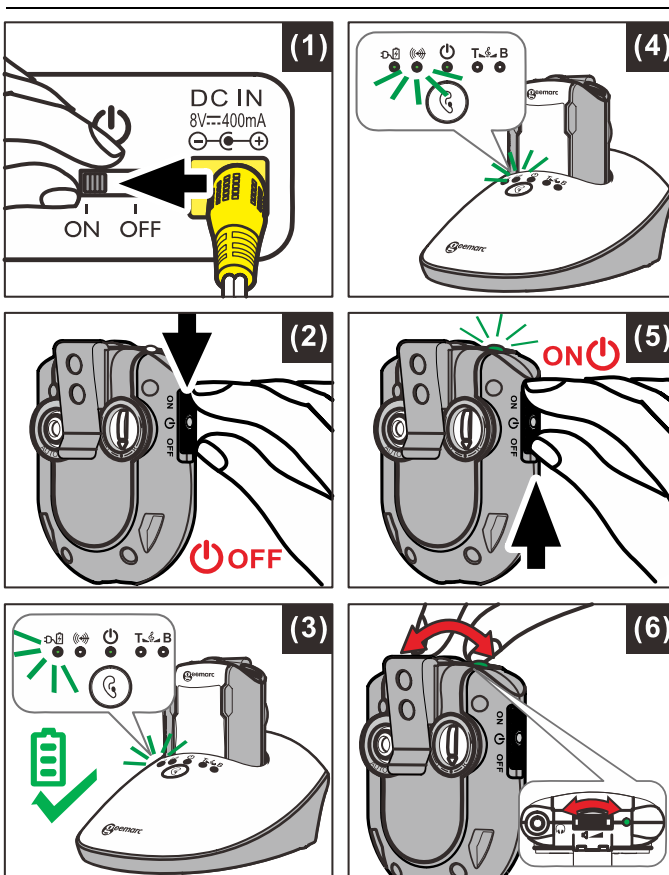


- (1) Connect the Power Supply to the DC IN Socket located on the Charge Cradle rear panel.
  - (2) Connect the Power Supply to an electricity socket (100-240V~50/60Hz).
  - (3) Connect one end of the Optical Cable to the rear panel of the Charge Cradle.
  - (4) Connect the other end of the Optical Cable to your Audio Source (e.g. TV set, Hi-Fi system) with Optical Output.
  - (5) Accessories for items (5) and (6) in above drawing are not provided in the pack components.
  - (6) If your Audio Source does not have an optical socket, then use one of the following Adapters (not provided in the pack components) that connects to the Audio In of the Transmitter.
    - 3.5mm to 3.5mm Audio Cable
    - 3.5mm to 6.3mm Adapter Plug
    - RCA Adapter Cable
    - SCART Adapter
  - (7) On the rear panel of the Charging Cradle, switch the Power ON/OFF Switch to ON. The green Power Indicator LED will glow immediately.
- When the audio signal is detected from the Audio Source, the Green LED Signal Indicator will glow constantly.

#### Lanyard installation



### OPERATION



#### Initial Operation

1. Make sure the CL7350 is plugged into the mains supply.
2. Switch ON the CL7350 – on the rear of the Charging Cradle (see figure (1) at right).
3. Place the TV Receiver in the Charging Cradle for at least three hours to allow it to fully charge.
  - Make sure the TV Receiver is switched OFF (see figure (2) at right).
  - The LED Indicator glows red during charging.
  - It will glow green after the battery is fully charged (see figure (3) at right).
4. After the three hours have passed and the charging LED has turned green, you can proceed to use the device.

#### Routine Operation

1. Switch on the Audio Source (TV set or audio device) that the Transmitter is connected to. The Signal LED Indicator will glow

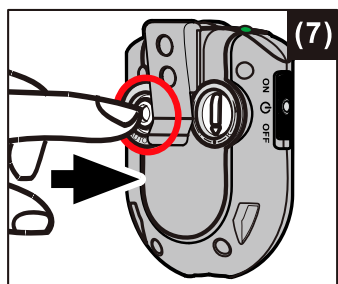
continuously (see figure (4) at right).

2. Put the Ear Phone plug into the 3.5mm phone jack of TV Receiver. On the TV Receiver, switch the ON the On/Off Switch (see figure (5) at right). The green signal LED Indicator will glow continuously.
3. Adjust the Volume to the desired sound level (see figure (6) at right), then fit the earbuds in your ears.

**NOTE:** Make sure the volume on your Audio Source (TV set or other audio device) is turned up to at least half of its full volume to get good sound quality in your Earbuds.



## Improving Sound by Switching Channels



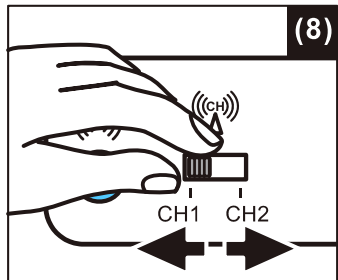
The CL7350 can transmit on either of two built-in frequency channels. You can select the channel that will produce better audio quality.

1. If the audio sound is distorted or unclear, press the Auto Tune Button on the TV Receiver (see figure (7) at right), to match the frequency of Channel 1 or Channel 2 set at the back of Transmitter. Allow a few seconds for the audio to resume.

2. If this does not help, switch the channel selector on the rear of the Charging Cradle (see figure (8) at right) and see if the audio quality has improved.

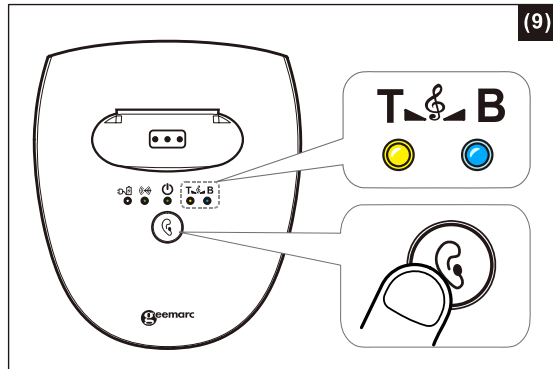
3. Press the Auto Tune button again to improve the quality still further.

**NOTE:** The Transmitter will turn off automatically after about 5 minutes if there is no audio signal from the audio source (TV set, etc.), or the signal from the audio source is too weak for proper reception. However, if the audio signal returns to an acceptable level, the transmission will automatically restart.



## Controlling the Tone (Bass & Treble)

You can adjust the tone of the audio you are listening to and enhance your listening pleasure by amplifying either the Treble or the Bass in the Headset Receiver.

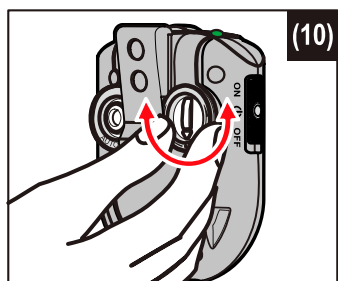


Press the Tone Clarity Button (T.C.B.) to switch cyclically between :

1. Enhanced treble (yellow LED glows T. & B. (yellow LED glowing)).

2. Enhanced bass (blue LED glows T. & B. (blue LED glowing)), or

3. Flat tone (bass and treble equally enhanced, no LEDs glowing T. & B. (no LEDs glowing)).



## Adjusting the Sound Balance (left-right)

You can adjust the sound to suit your hearing in each ear.

With the Receiver on, rotate the Sound Balance button (see figure (10) at right) to adjust the sound – you will notice that the sound seems to “drift” from one side to the other. Play with this button until you find your most pleasant sound balance.

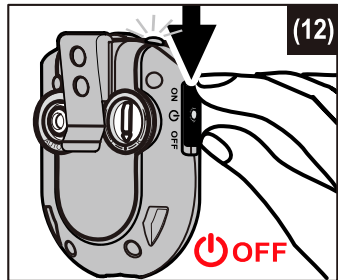
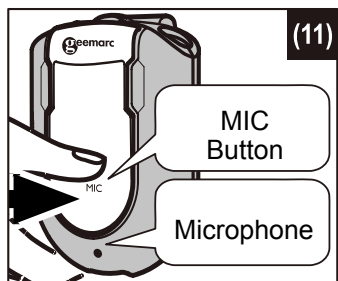
## Using the Mic Button and Microphone for Conversation

You can switch from Listening mode to Conversation mode without having to take off the Receiver.

To talk or listen to someone:

1. Press the Mic button (see figure (11) at right). This will shut off the Audio Source and the Receiver will become an amplifier by activating the Microphone.

2. To resume listening to your audio device, press the Mic button again. The microphone will be shut off and the audio will resume.



## Charging the Battery

1. The signal LED Indicator on the Headset Receiver will blink slowly when the battery level is low. At this stage there are about 20 minutes of operating time before the Headset will switch off. Recharge the battery.

2. Switch OFF the On/Off Switch on the Headset (see figure (12) at right). The green LED on the Headset should turn off.

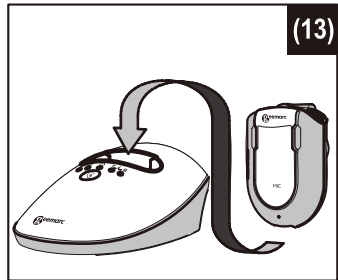
3. Place the Headphone on the Charging Cradle (see figure (13) at right), make sure the charge contact touches the charge pins on the Charging Cradle.

4. The Charging process starts automatically.

- The LED Indicator glows red during charging.
- It will glow in green after the battery is fully charged.

### WARNING:

The battery must not be exposed to excessive heat such as sunshine, fire etc.



Do not attempt to replace the original rechargeable battery.

When the headphones are not in use, move the switch to the OFF position to avoid damaging the batteries.

The battery must always be fully charged before first use. An initial 3 hours charge is required to guarantee an acceptable service life for the rechargeable battery. Always ensure that the Receiver is switched to OFF position while the battery is charging.

Excessive sound pressure from earphones and headphones can cause hearing loss.

### IMPORTANT:

This unit should be operated with built-in rechargeable battery only. When replacing the battery or when disposing of the unit, always comply with applicable laws relating to the disposal of battery. Please place them in a proper disposal container to ensure that they are eliminated safely and in an environmentally friendly way.

## TECHNICAL SPECIFICATIONS

Battery operating Time	: Up to 6 Hours
Range	: between 10 to 25 meters
Frequency response	: 30 Hz – 10K Hz
Signal-to-noise ratio	: >65 dB
Distortion	: <2%
Headset weight	: 50 grams
Operating voltage	: Charging Cradle: 8V, 400mA : Headset: 3.7V, 350mA Lithium Polymer Battery

Transmission mode	: UHF Stereo
Carrier frequency	: 863 MHz (CL7350 OPTICLIP VDE&UK version) : 900 MHz (CL7350 OPTICLIP US version)

## TROUBLESHOOTING

### No Sound

- Ensure the power supply is properly plugged into the electricity socket and that its cable is properly connected to the DC IN connector on the Charge Cradle.
- Ensure that the Headset Power ON/OFF switch is switched ON.
- Check the state of the Battery charging in the Headset – place it in the Charge Cradle and recharge the battery until the Battery Charge LED turns green.
- Ensure that the TV set, Hi-Fi system or audio component is switched ON and set to a channel that broadcasts an audio signal.
- Ensure that the volume on the connected audio component is turned up to at least half its full volume.
- The connected audio/video equipment may not be in playback mode. Start playback on by the equipment.
- Use the Volume Control on the Headset to turn up the volume.
- Check whether the Headset volume level is set too low. Adjust the volume to a suitable level.
- If the sound is not clear and distorted, change the frequency Channel selection on the back of the Charge Cradle, and then press the Auto Tune Button on the Headset Receiver for better reception.

### Distortion

- The battery inside Headset may need charging. Recharge the battery.
- The Headset may be too far away from the transmitter inside the Charge Cradle. Bring them closer together.
- The audio signal input level from the audio source is too low. Increase the volume at the audio source.
- If the sound is not clear and distorted, change the frequency Channel on the back of the Charge Cradle, and then press the Auto Tune Button on the Headset for better reception.

## Cleaning & Maintenance

**Note:** DO NOT use alcohol, chemical or spirit based cleaning agents.

Wipe Base and Headset clean with a damp cloth.

## GUARANTEE

From the moment your Geemarc product is purchased, Geemarc guarantee it for the period of two years. During this time, all repairs or replacements (at our discretion) are free of charge. Should you experience a problem then contact our help line or visit our website at [www.geemarc.com](http://www.geemarc.com).

The guarantee does not cover accidents, negligence or breakages to any parts. The product must not be tampered with or taken apart by anyone who is not an authorized Geemarc representative.

The Geemarc guarantee in no way limits your legal rights.

**IMPORTANT: YOUR RECEIPT IS PART OF YOUR GUARANTEE AND MUST BE RETAINED AND PRODUCED IN THE EVENT OF A WARRANTY CLAIM.**

**Please note: The guarantee applies to the United Kingdom only.**

## DECLARATIONS

### CE Directives

Geemarc Telecom SA hereby declares that this product is in compliance with the essential requirements and other relevant provisions of the Radio and Telecommunications Terminal Equipment Directive 2014/53/UE.

The CE declaration of conformity may be consulted at [www.geemarc.com](http://www.geemarc.com)

### FCC NOTICE

This device complies with part 15 of the FCC Rules. Operation is subject to the following two conditions:

1. This device may not cause harmful interference, and
2. This device must accept any interference received, including interference that may cause undesired operation.

### FCC CAUTION

Any changes or modifications not expressly approved by the party responsible for compliance could void the user's authority to operate this equipment. This device and its antenna(s) must not be co-located or operating in conjunction with any other antenna or transmitter.

**Electrical connection:** The apparatus is designed to operate from a 230V 50Hz supply only. (Classified as hazardous voltage according to EN60950 standard). The apparatus does not incorporate an integral power on/off switch. To switch off the apparatus, disconnect the power adaptor.

When installing the apparatus, ensure that the mains power socket is readily accessible.

### Recycling Directives

The WEEE (Waste Electrical and Electronic Equipment) has been put in place for the products at the end of their useful life are recycled in the best way.

When this product is finished with, please do not put it in your domestic waste bin. Please use one of the following disposal options:

- Remove the batteries and deposit them in an appropriate WEEE skip.

Deposit the product in an appropriate WEEE skip.

- Or, hand the old product to the retailer. If you purchase a new one, they should accept it.

Thus if you respect these instructions you ensure human health and environmental protection.



For product support and help visit our website at [www.geemarc.com](http://www.geemarc.com)

Contact Geemarc UK:

5B Swallow Court, Swallowfields, Welwyn Garden City, Hertfordshire, AL7 1SB, UK  
telephone **01707 387602**  
or fax **01707 832529**